

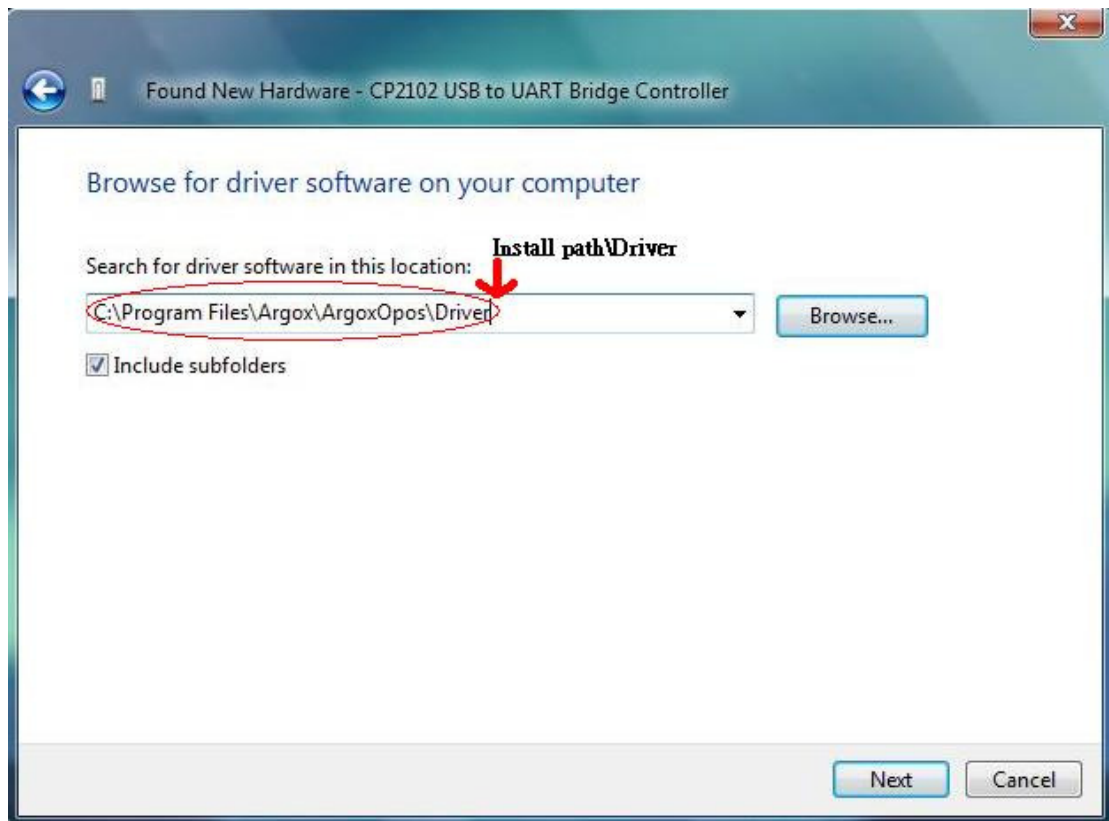
1. OPOS USB Setting Instruction.

Please refer to the following steps to setting the driver and scanner.

AS-8120/8150/8250/8310/8312

Step 1. Launch ArgoxOpos_Driver.exe, OPOS driver will be installed under C:\Program Files\Argox\ArgoxOpos

Step 2. Plug in USB OPOS Scanner. Window will ask you for device driver install, just locate the driver position C:\Program Files\ARGOX\ArgoxOpos\Driver and complete driver install.



Step3. Reset your scanner by “!IN” command.

Step3-1: Enter Program Mode



Step3-2: Reset Default Setting



Step4-1: Enter Program Mode



Step4-2: Opos Setting



Step4-3: Finish



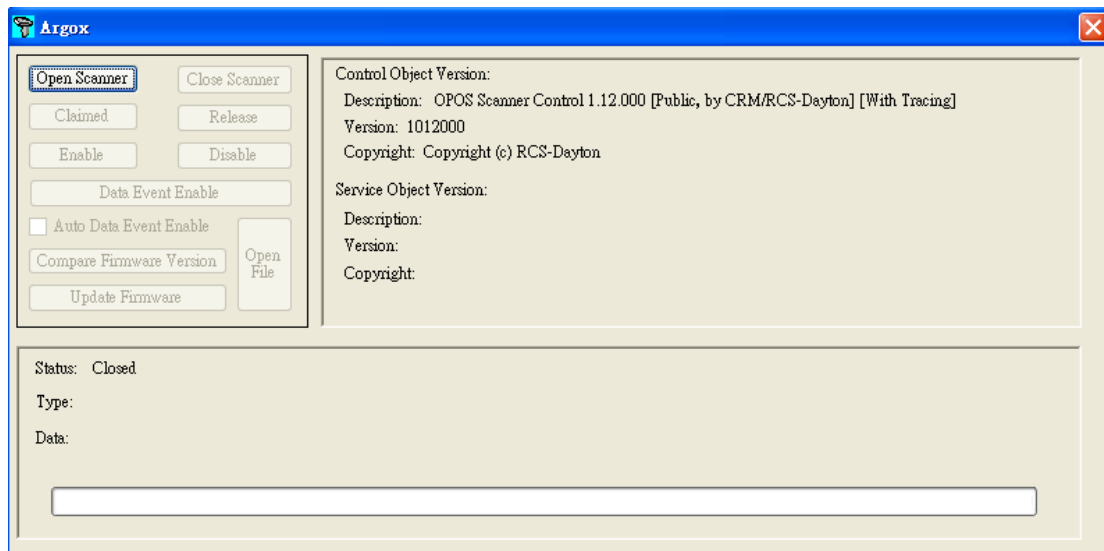
2. Data Event Demo.

Prerequisite: .Net FrameWork 2.0 is required to installed on the system.

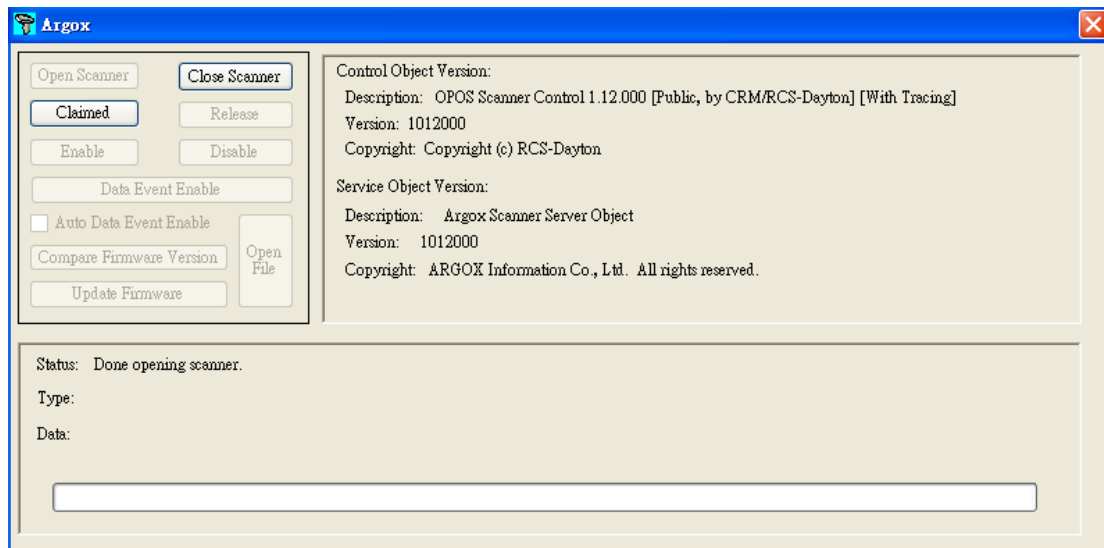
Step1. Launch ArgoxOpos_Demo.exe to install Demo program.

By default, demo program “ArgoxApplication.exe” will be installed under C:\Program Files\Argox\ArgoxOPOS.

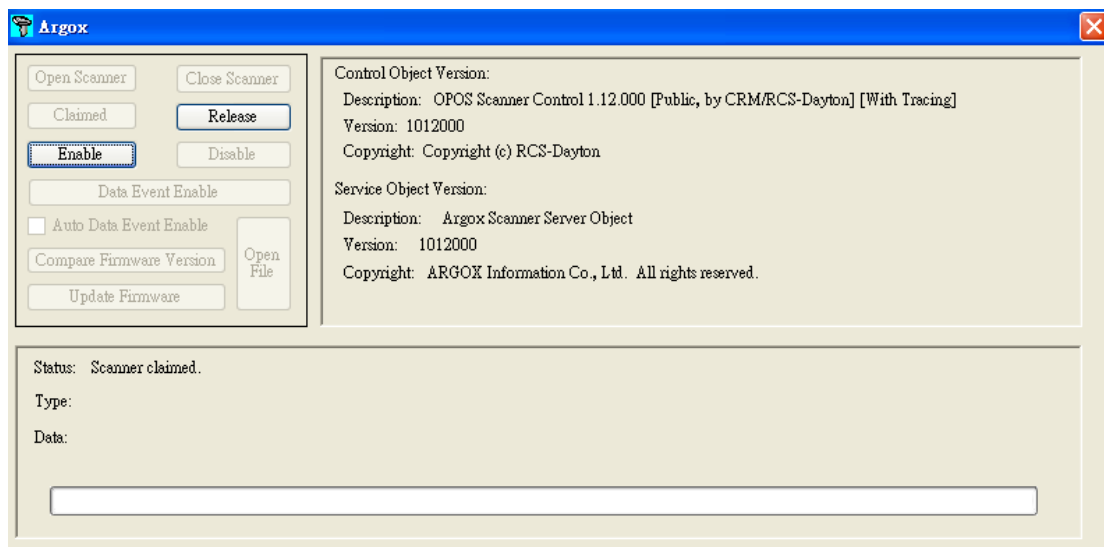
A WindowShot is shown as below after execution ArogxApplication.exe.



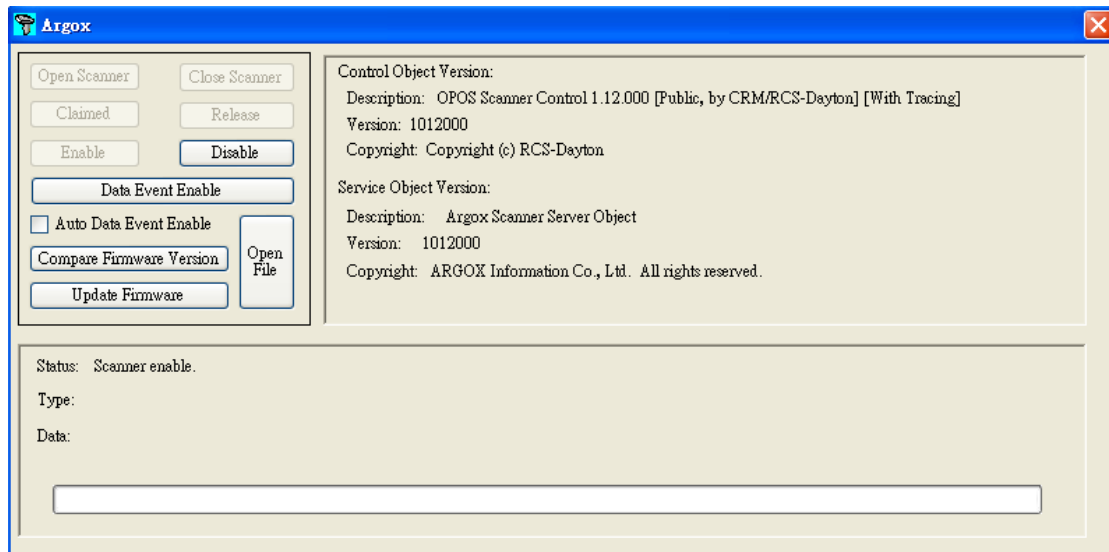
Step2. Press “Open Scanner” button to open a argox scanner, :



Step 3. Press “Claimed” button: to execute OPOS claimed function to identify where a OPOS device is ready or not. If a OPOS device is ready, the screenshot will be shown as below. If no OPOS device is ready, an error dialog will be popup.

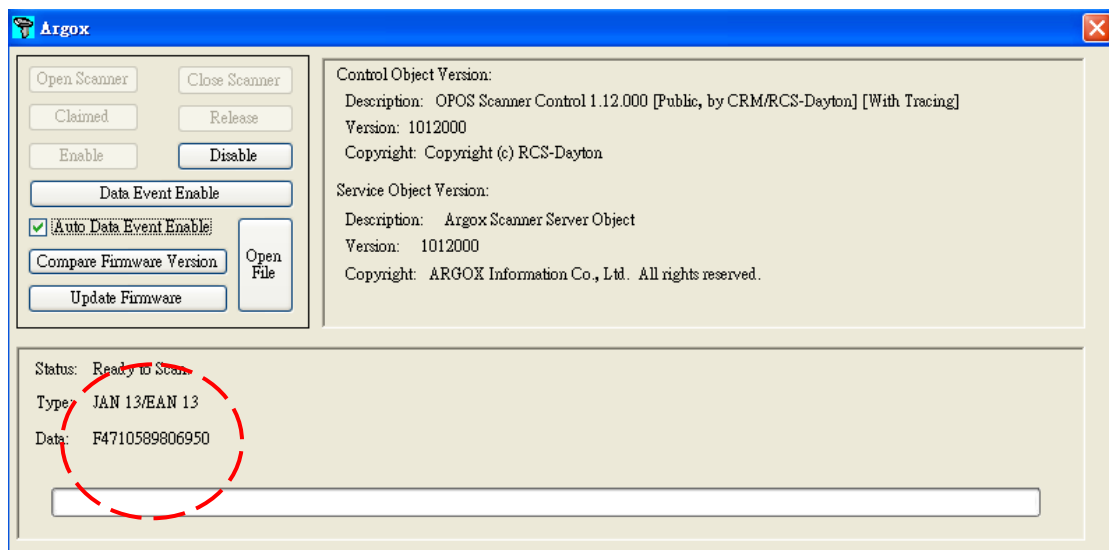


Step4. Press “Enable” button to execute OPOS enable function. If a OPOS device is ready, the screenshot will be shown as below.



Step 5. Press “Auto Data Event Enable” button to enable OPOS “SO” component ability to send event to “CO” component automatically.

Step6. Scanning barcode scanner. ArgoxApplication will get a data from OPOS driver.

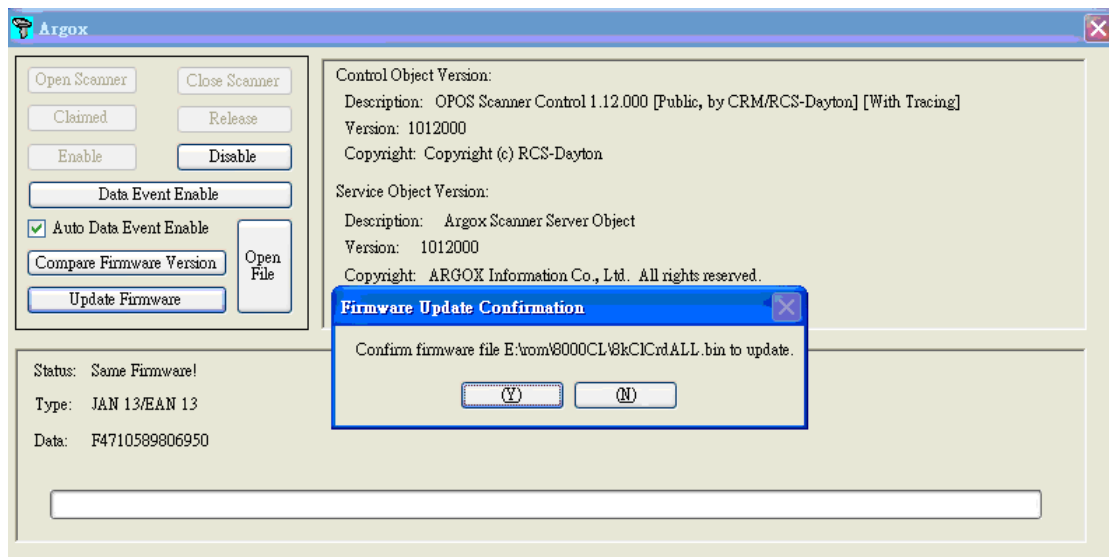


3. Firmware Upgrade Demo

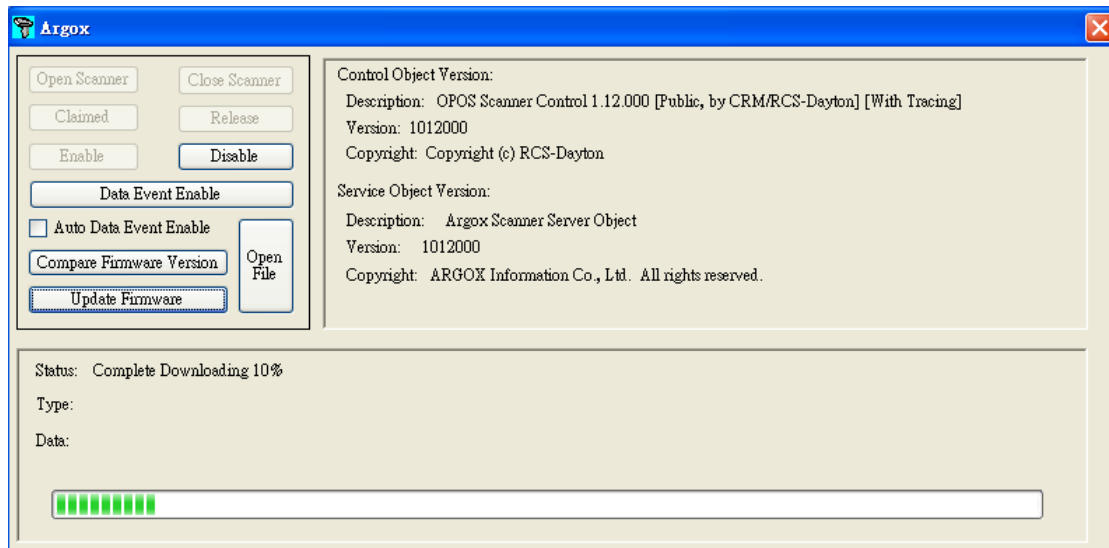
Step 1. Press “Open File” to select a firmware file.

Step2. Press “Compare Firmware Version” to execute OPOS compare firmware function.

Step3. Press “Update Firmware” to execute OPOS update firmware function.



Downloading Firmware:



Note:

1. If you want to display ScanDataType, make sure to display CodeID.
2. Claim method may take several seconds to obtain scanner information.
3. Windows 95/98/ME are no supported.
Windows NT 4 is no supported.
4. Methods: CheckHealth, ClearInput, ClearInputProperties, ClearOutput, DirectIO, Reset Statistics, RetrieveStatistics, UpdateStatistics are no Supported.